



## Notice of topographic surveys – Watling Street, Rockhill area

June 2021 | [www.hs2.org.uk](http://www.hs2.org.uk)

High Speed Two (HS2) is the new high speed railway for Britain. Balfour Beatty VINCI (BBV) is working in partnership with HS2 Ltd to build the new railway in your area.

### Topographic surveys

We will be carrying out topographic surveys in locations along Watling Street / Rockhill from Monday 5 July to Friday 9 July 2021.

To complete the surveys a team of engineers will visit the locations and will capture data about what is present in the area using a digital measure or camera. This will include recording location and sizes of features such as hedges, grid covers, kerbs, road layout and road markings.

These surveys will help us as we continue to finalise the design of the new railway and to reinstate features where possible after construction.

### Temporary lane closures

To be able to carry out these inspections safely and effectively, we will need to put in place temporary lane closures controlled with traffic lights on Watling Street/Rockhill. The temporary lane closures will be in place for 5 days, from 5 July to 9 July 2021 and be operational from 9.30am to 4:30pm, with an hour before work begins to set up and afterwards to take down our equipment.

Access to properties and businesses will be maintained at all times.

**If you have a question about HS2 or our works, please contact our HS2 Helpdesk team on 08081 434 434 or email [hs2enquiries@hs2.org.uk](mailto:hs2enquiries@hs2.org.uk)**

### Duration of works

Watling Street/Rockhill  
5 July – 9 July 2021 for 5 days.

Working hours 9.30am – 4:30pm.

Our workforce can be on site up to 1 hour before work begins to set up the site and again afterwards to take down our work equipment.

### What to expect

Traffic Lights

Barriers around our working area.

Clear signage in place.

### What we will do

Ensure that our work areas are safe and secure.

Keep you up to date through [www.hs2inbirmingham.co.uk](http://www.hs2inbirmingham.co.uk)

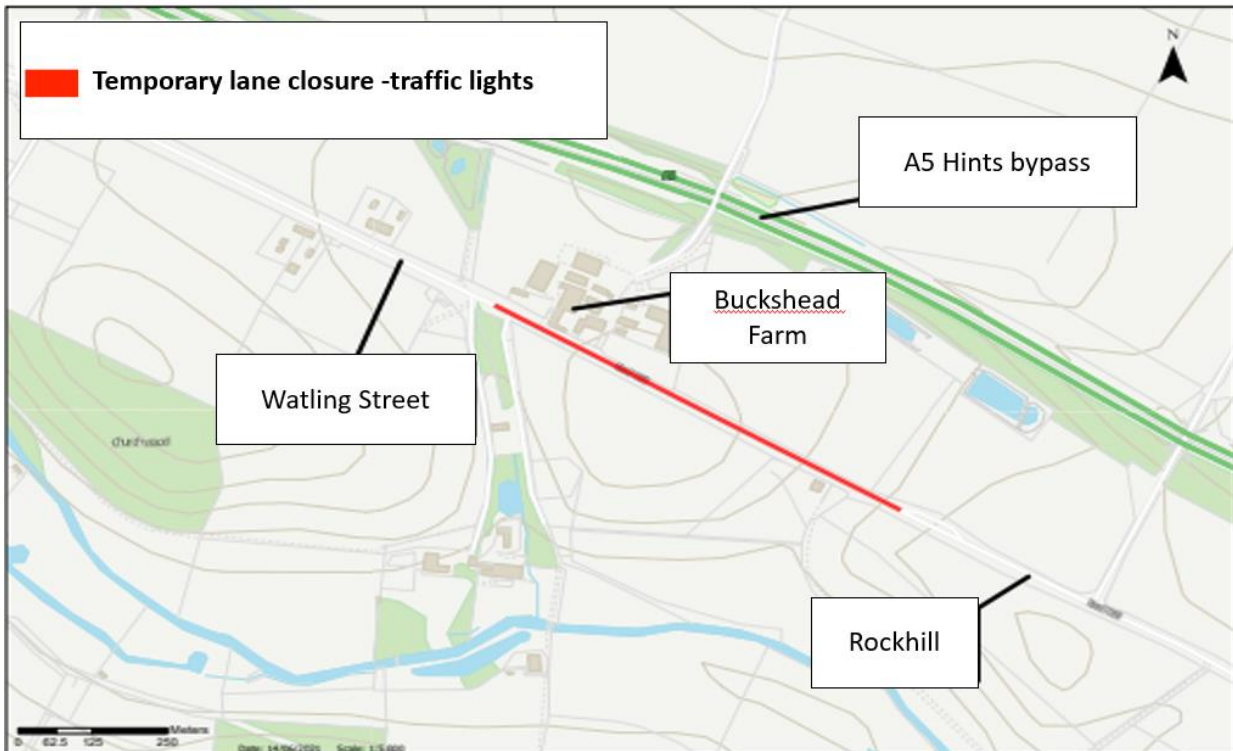
# Notice of topographic surveys– Watling Street, Rockhill area

Notification



[www.hs2.org.uk](http://www.hs2.org.uk)

**Watling Street / Rockhill area**



## HS2 during the COVID-19 pandemic

We are continually reviewing the works on our construction sites in line with the Government and Public Health England (PHE) advice on dealing with coronavirus. The Government's current coronavirus strategy makes clear that construction activity can continue as long as it complies with guidance. The health and safety of our workforce and the communities we affect is our key priority. Please be assured that those sites that are currently still working are doing so because they can operate within PHE and construction industry guidelines.

Contact our HS2 Helpdesk team on **08081 434 434**

# What else is happening in your area?

[www.hs2.org.uk](http://www.hs2.org.uk)

## Contact our HS2 Helpdesk team

Our team is here to listen and respond to your enquiry, complaint or feedback to help us be a good neighbour.

You can contact our Helpdesk team all day, every day of the year on:

Freephone: **08081 434 434**

Minicom: **08081 456 472**

Email: [hs2enquiries@hs2.org.uk](mailto:hs2enquiries@hs2.org.uk)

## Keep up-to-date with your local community website

To find out more about what's happening in your area and receive regular email updates, you can sign up to our local community websites at: [www.hs2inyourarea.co.uk](http://www.hs2inyourarea.co.uk).

## About our Community and Business Funds

We are offering two funds that are available to local communities and businesses between the West Midlands and London, to help with the disruption caused by our construction work. These are the Community and Environment Fund (CEF) and the Business and Local Economy Fund (BLEF).

The CEF is designed to give communities the opportunity to share in the benefits of HS2. It is an allocated fund that communities are able to apply for, to help to support local projects that aim to improve their local area.

The BLEF is designed to support local economies that may be disrupted by the construction of HS2. BLEF grants are for local business support organisations and local authorities to help maintain business activity in local communities.

For more information about each of these funds, including how to apply, please visit: <https://www.groundwork.org.uk/hs2funds>



# Keeping you informed

We are committed to keeping you informed about work on HS2. This includes ensuring you know what to expect and when to expect it, as well as how we can help.

## Residents' Charter and Commissioner

The Residents' Charter is our promise to communicate as clearly as we possibly can with people who live along or near the HS2 route.

[www.gov.uk/government/publications/hs2-residents-charter](http://www.gov.uk/government/publications/hs2-residents-charter)

We also have an independent Residents' Commissioner whose job is to make sure we keep to the promises we make in the Charter and to keep it under constant review. Find reports at:

[www.gov.uk/government/collections/hs2-ltd-residents-commissioner](http://www.gov.uk/government/collections/hs2-ltd-residents-commissioner)

You can contact the Commissioner at: [residentscommissioner@hs2.org.uk](mailto:residentscommissioner@hs2.org.uk)

## Construction Commissioner

The Construction Commissioner's role is to mediate and monitor the way in which HS2 Ltd manages and responds to construction complaints. You can contact the Construction Commissioner by emailing: [complaints@hs2-cc.org.uk](mailto:complaints@hs2-cc.org.uk)

## Property and compensation

You can find out all about HS2 and properties along the line of route by visiting:

[www.gov.uk/government/collections/hs2-property](http://www.gov.uk/government/collections/hs2-property)

Find out if you're eligible for compensation at:

[www.gov.uk/claim-compensation-if-affected-by-hs2](http://www.gov.uk/claim-compensation-if-affected-by-hs2)

## Holding us to account


If you are unhappy for any reason you can make a complaint by contacting our HS2 Helpdesk team. For more details on our complaints process, please visit our website:

[www.hs2.org.uk/how-to-complain](http://www.hs2.org.uk/how-to-complain)

## Contact Us

Contact our HS2 Helpdesk team all day, every day of the year on:

 Freephone **08081 434 434**

 Minicom **08081 456 472**

 Email **[hs2enquiries@hs2.org.uk](mailto:hs2enquiries@hs2.org.uk)**

Write to:

**FREEPOST**

**HS2 Community Engagement**

Website **[www.hs2.org.uk](http://www.hs2.org.uk)**

To keep up to date with what is happening in your local area, visit: **[www.hs2inyourarea.co.uk](http://www.hs2inyourarea.co.uk)**

**Please contact us if you'd like a free copy of this document in large print, Braille, audio or easy read. You can also contact us for help and information in a different language.**

HS2 Ltd is committed to protecting personal information. If you wish to know more about how we use your personal information please see our Privacy Notice <https://www.gov.uk/government/publications/high-speed-two-ltd-privacy-notice>

**Reference number: HS2-EW-BBV-Ph1-Ar-No-N1-Traf-43-07/05/2021**

High Speed Two (HS2) Limited, registered in England and Wales.

Registered office: Two Snowhill, Snow Hill Queensway, Birmingham B4 6GA.

Company registration number: 06791686. VAT registration number: 888 8512 56.